

19 JUNE 2020



AteneoBlueCloud

Online education the Ateneo way



FRIDAY FORUM ON
FAITH & VALUES FORMATION

DESIGNING ONLINE IGNATIAN FORMATION

A GUIDED AND COLLABORATIVE PROCESS

BASIC + HIGHER EDUCATION

CAMPUS MINISTRY

SERVICE & SOCIAL INVOLVEMENT

STUDENT DISCIPLINE

GUIDANCE & COUNSELING

STUDENT ACTIVITIES

FACULTY, ALUMNI, & PARENTS FORMATION

CLERGY & THEOLOGY

PE & ATHLETICS

Faith & Values Formation

#1

LOGISTICAL SHELL

	FORMATION PROGRAMS	FORMATION SERVICES	ACADEMIC PROGRAMS
EXAMPLES	RECOS/RETREATS IMMERSION/SERVICE STUDENT ACTIVITIES ATHLETICS FACULTY FORMATION PARENTS FORMATION ALUMNI FORMATION	GUIDANCE & COUNSELING STUDENT DISCIPLINE	CLE THEOLOGY P.E.
LEARNING/ FORMATION HOURS	?	?	16 to 32 48 to 60 hours
NO. OF MODULES	?	?	3 to 4 units 4 to 6 modules

#1

*4 to 6 modules (48 to 60 hours)
3 - 4 units (16 to 32 hours)*

**RECOS/RETREATS
IMMERSION/SERVICE**

*4 to 6 modules (48 to 60 hours)
3 - 4 units (16 to 32 hours)*

**STUDENT ACTIVITIES
ATHLETICS**

**FACULTY FORMATION ?
PARENTS FORMATION
ALUMNI FORMATION**

**CLE
THEOLOGY
P.E.**

**GUIDANCE &
COUNSELING ?**

STUDENT DISCIPLINE

*If you have a PROGRAM,
1 or 2 sessions in one of the modules*

FORMATION DESIGN PROCESS

ADL PROCESS +

FORMATION OUTCOMES

Module 2

ASSESSMENT

Module 3

CONTENT + STUDENT TASKS

Formation Experiences

Modules 4 & 5

#2 FORMATION OUTCOMES

*Profile of Ideal Graduate
Core Curriculum Outcomes*

4 Cs: Grad @Grad	Additional Cs	Descriptors
COMPETENCE		Holistic > Academic
	COMMUNITY	Persons with Others
CONSCIENCE		Moral Decision-Making
	CHRIST-CENTEREDNESS	AMDG + Discernment
	CHARACTER	Self-Mastery
COMPASSION		Persons for Others
	CULTURE	Global Citizenship
COMMITMENT		<i>Magis</i>

Ignatian Competences

#2

FORMATION OUTCOMES

*Are you clear about your OUTCOMES?
Choose one or two priorities.*

	4 Cs: Grad @Grad	Additional Cs
PE CLE & THEOLOGY CAMPUS MINISTRY SERVICE & SOCIAL INVOLVEMENT STUDENT DISCIPLINE GUIDANCE & COUNSELING	COMPETENCE	COMMUNITY
	CONSCIENCE	CHRIST-CENTEREDNESS
		CHARACTER
	STUDENT ACTIVITIES ATHLETICS	COMPASSION
FACULTY, ALUMNI, & PARENTS FORMATION	COMMITMENT	

#2 ASSESSMENTS



The Criminal Analogy

Everyone is to be presumed innocent of formation until proven “guilty” beyond reasonable doubt.

EVIDENCES
of **FORMATION**

NEED NOT
BE FORMAL
OR GRADED

#2 ASSESSMENTS

What are possible assessments?

FORMATIVE

Basis for concrete and actionable **feedback** & informed & targeted **intervention**

AUTHENTIC

More real-world context, possibly paper-and-pen

OUTPUT

Project, Paper, etc.

REFLECTION

Essay or Discussion
(synchronous or asynchronous)

EVALUATION

*"I used to think...
Now I..."*

**SELF-
PEER-
&/or
TEACHER-**

**RUBRICS
with
CRITERIA**

#3

digital

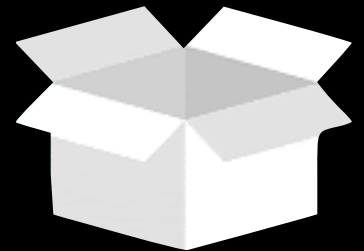
FORMATION EXPERIENCES

FORMATION OUTCOMES

ASSESSMENT

CONTENT + STUDENT TASKS

Formation Experiences



Resist the temptation of simply **IMPORTING** your existing content and activities on to the LMS.

Use this as an opportunity to think of online **ENGAGING** and even **POWERFUL** student experiences?

digital

FORMATION EXPERIENCES

ENGAGING + FORMATIVE

VAST

VIRTUAL

VICARIOUS

**SYNCHRONOUS OR
ASYNCHRONOUS**

**NUMEROUS POSSIBILITIES
GLOBAL**

SIMULATIONS

PEOPLE'S STORIES

digital

VAST

VIRTUAL

VICARIOUS

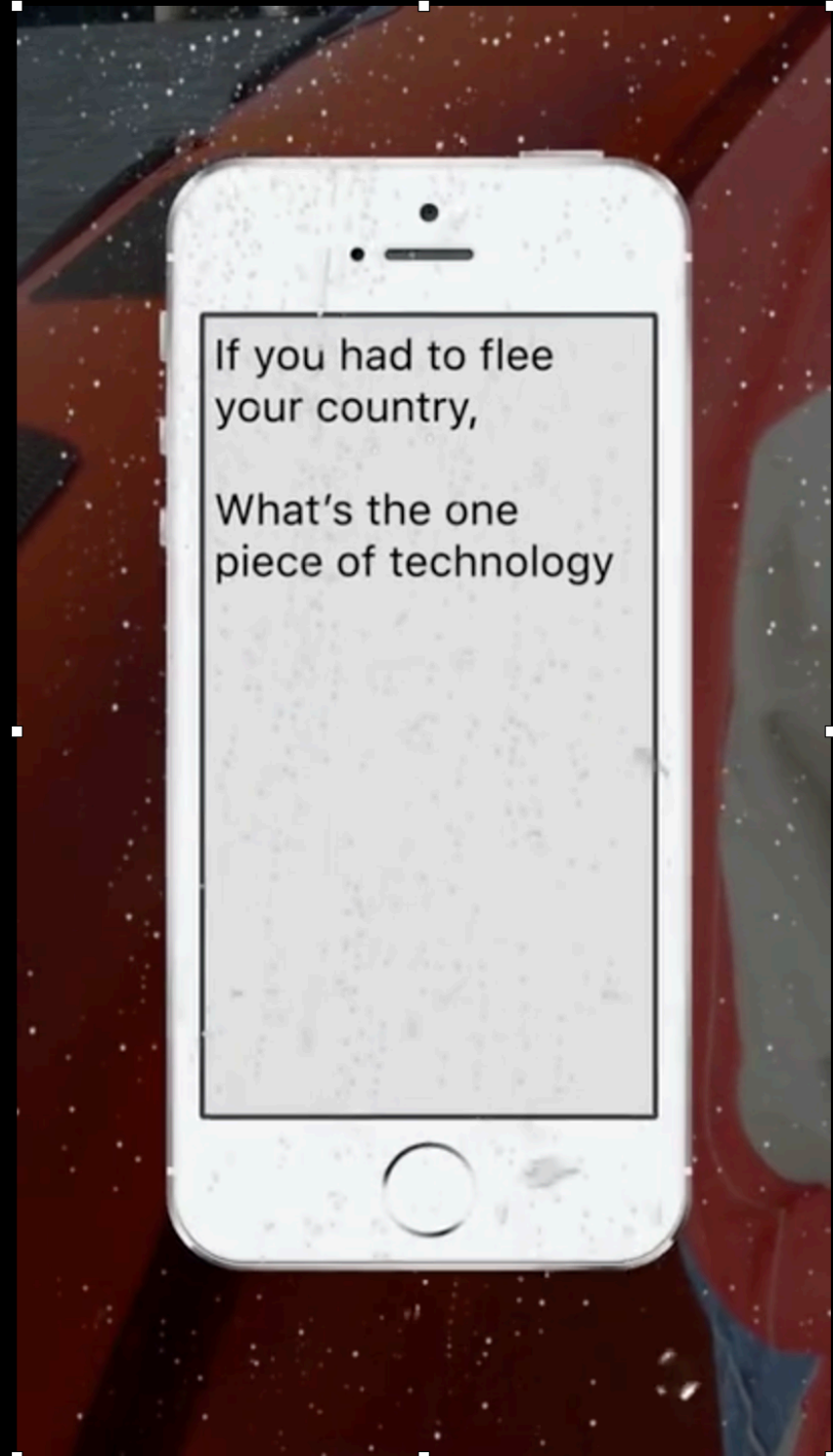
**FORMATION
EXPERIENCES**

**COMPASSION
Persons for Others**

REFUGEE ISSUE

SIMULATED

*IN THE SHOES
OF A REFUGEE*





THE SHORTEST DISTANCE TO THE **TRUTH**
IS A STORY.

BRAINSTORMING BREAKOUT

FORMATION OUTCOMES	ASSESSMENTS	FORMATION EXPERIENCES	COMMENTS/ QUESTIONS